



S/4HANA and the Intelligent Enterprise

07.05.2020 Move-in-Motion

Agenda

MATTINA

ANTONELLA DE BARI
SAP

Intelligent Enterprise
Overview

11:15 - 11:35

MICHELE FRANCO
GPA GROUP

EPC@GPA

11:40 - 12:00

ALESSANDRO VANIN
GPA GROUP

SAP S/4HANA
Potenzialità Finance

12:05 - 12:25

MICHELE FRANCO
GPA GROUP

SAP S/4HANA
Potenzialità Operations

12:30 - 12:50

POMERIGGIO

ERP SIMULATOR
SAP S/4HANA

Deep Dive
Technical Session

14:30 - 15:30

CONCLUSION &
GET TOGETHER

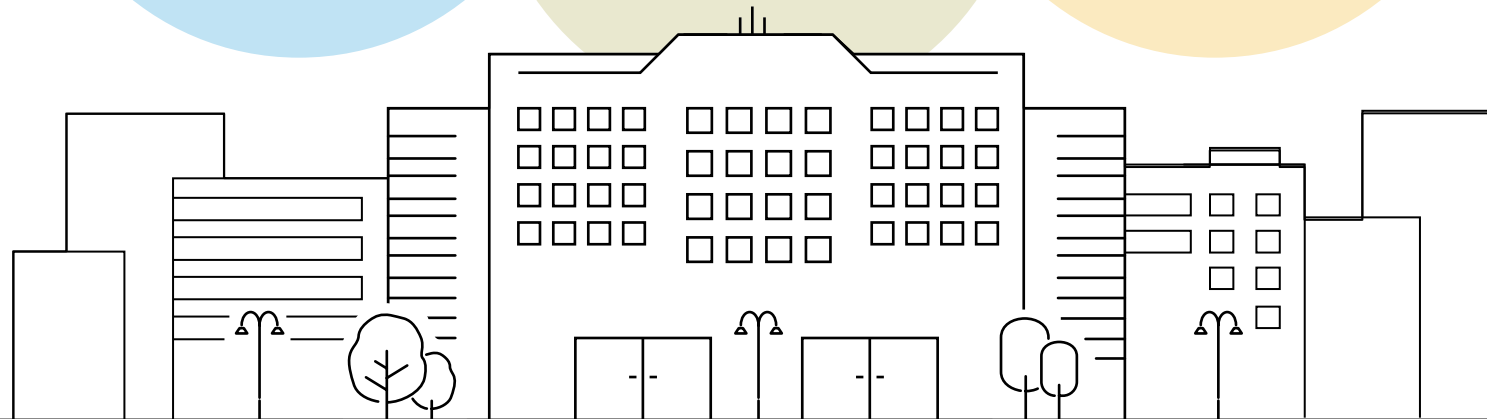
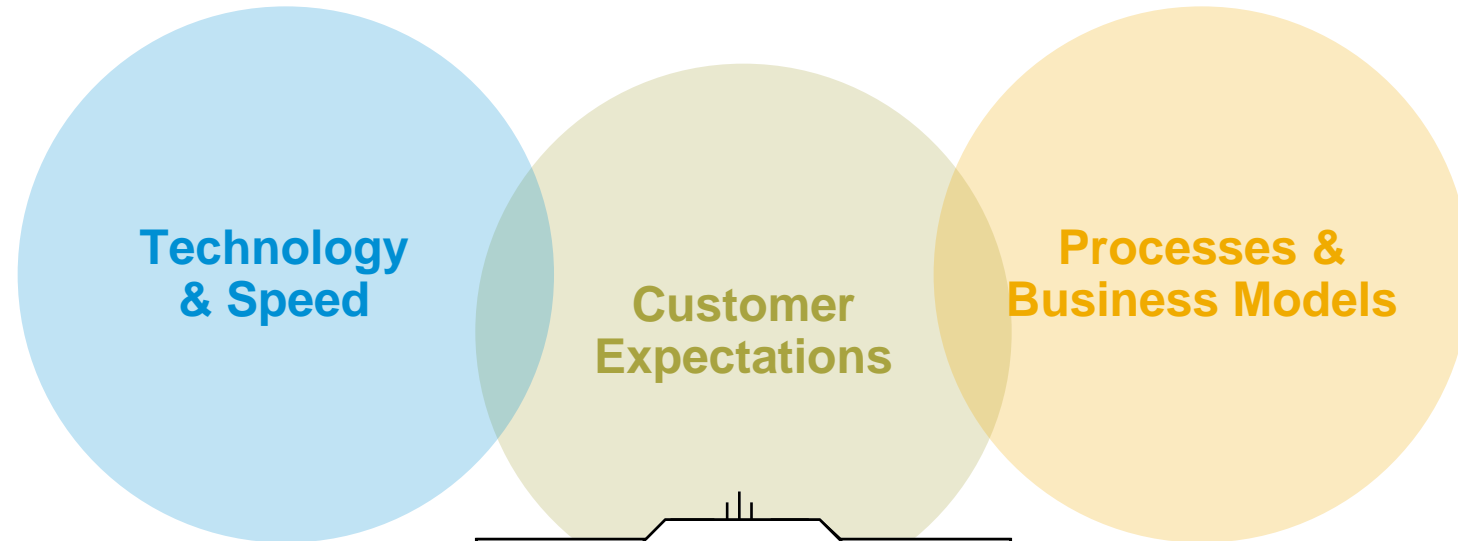
Q&A

15:30 - 15:45

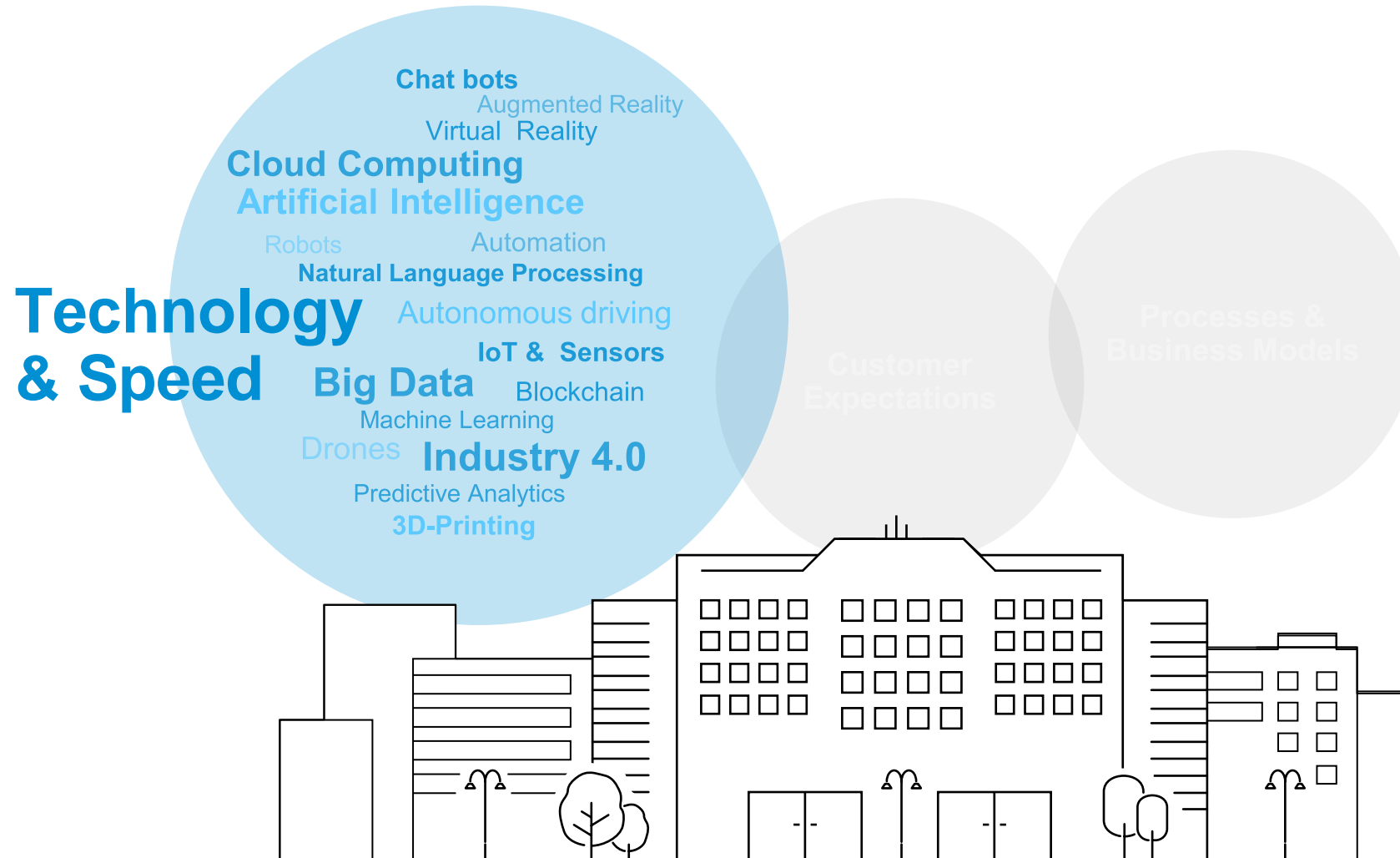
James Brian Quinn *Intelligent Enterprise (1992)*
posits that **intellect** is the core resource in producing and
delivering services

«Esiste un legame preciso tra tecnologia e business...
Affinché l'impresa tecnologica abbia successo, è necessaria l'intelligenza dei
processi strategici attuati dai servizi umani...»

Digitalization Today



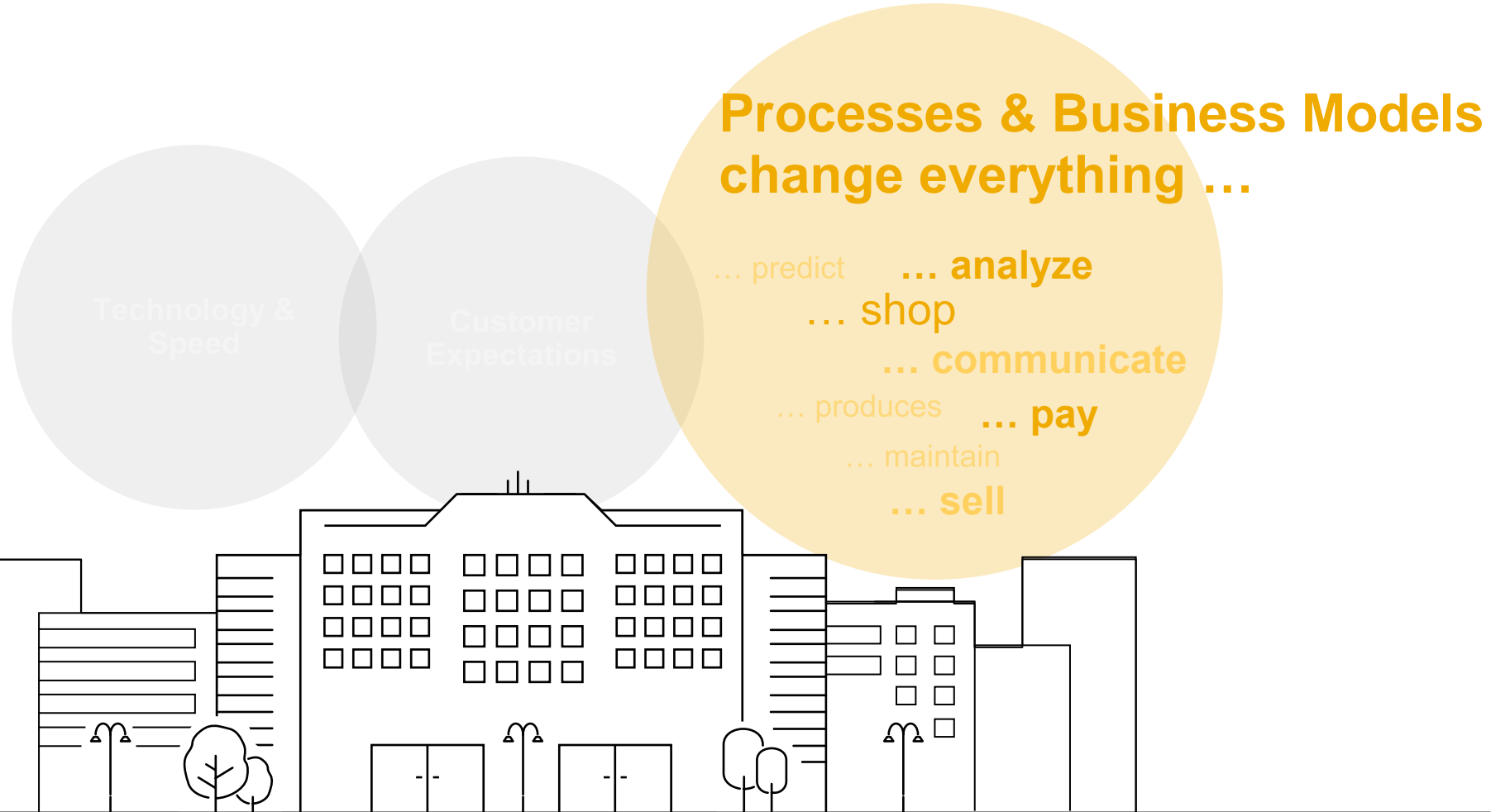
Digitalization Today



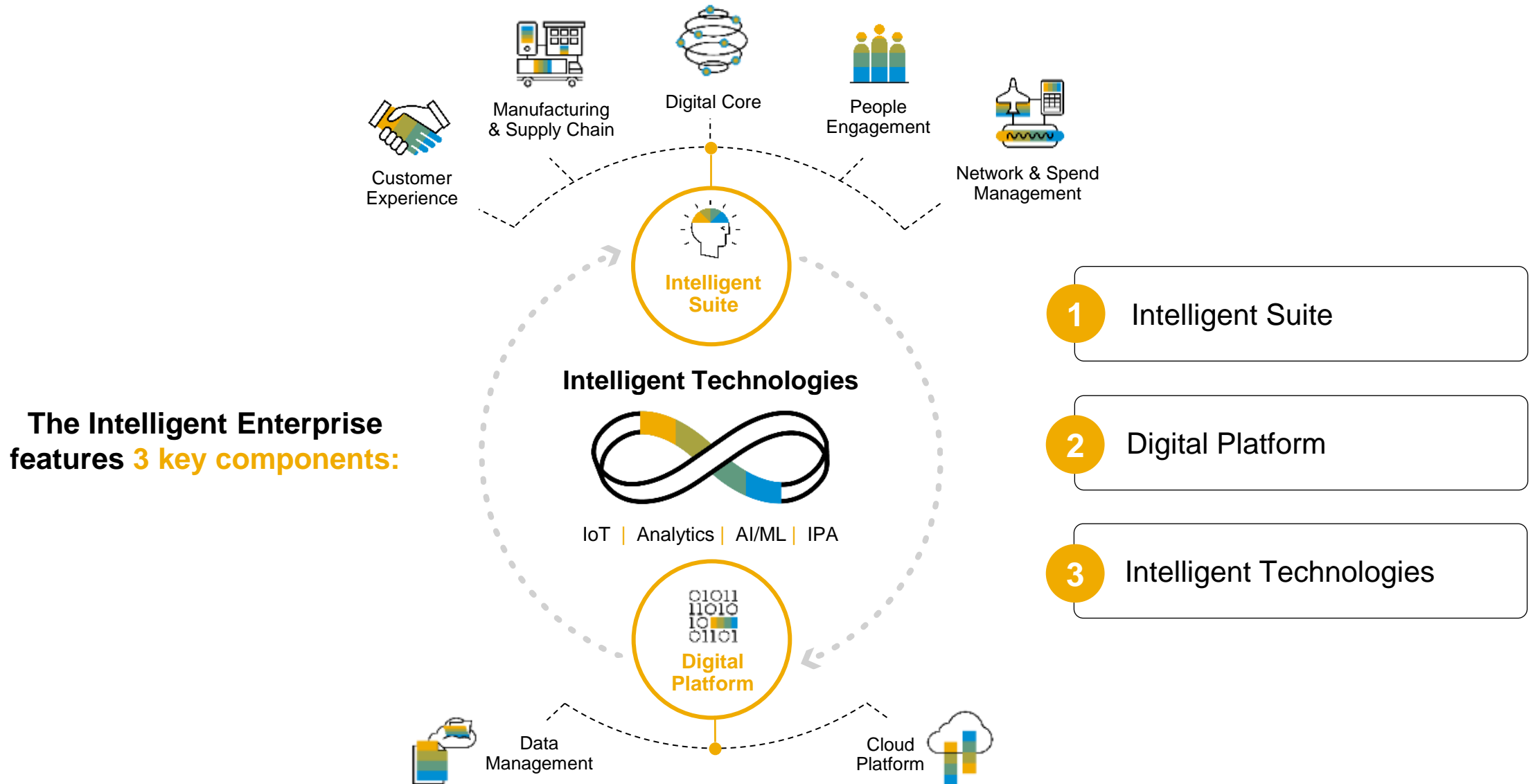
Digitalization Today



Digitalization Today

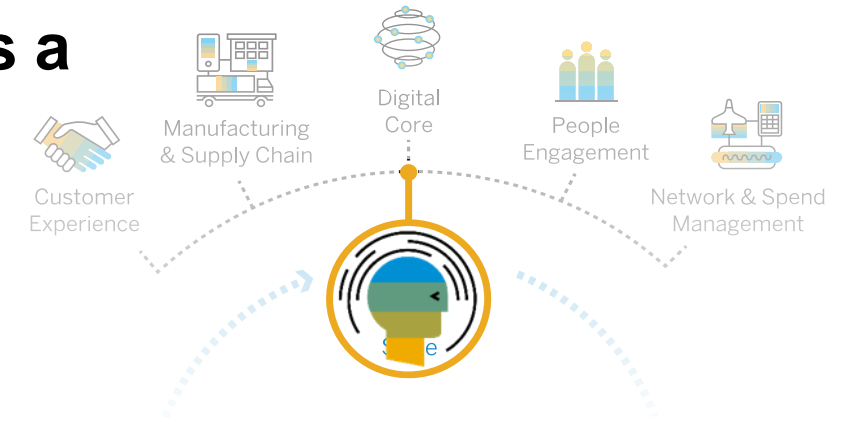


The Intelligent Enterprise Framework



How new capabilities are enabled only with SAP S/4HANA

To become an Intelligent Enterprise, digital core is a foundational requirement



SAP HANA enables new capabilities



Real-time processing



Combined transactions and analytics



Simplified data model

1

Intelligent automation

2

Insight and prediction

3

Industry best practices

Start with SAP S/4HANA to create end-to-end intelligent processes across all lines of business and industries, take the next leap in automation of key functions, and move first with machine learning investments by SAP

Simplifying database & table structures to prepare for scale

SALES

	Document			Item	
	Header				
Sales Order	VBAK		>	VBAP	VAKPA VAPMA
Delivery	LIKP		>	LIPS	VLKPA LKPMA
Billing Document	VBRK		>	VBRP	VRKPA VRPMA
Status Info	VBUK			VBUP	
Conditions		KONV			VBOX
Document Flow		VBFA			

FINANCE

	Document			Totals			Indices		
	Header	Item							
GL, AR, AP	BKPF	BSEG	>	GLT0	KNC1	KNC3	BSIS	BSAS	BSIK
			>	LFC1	LFC3		BSID	BSAD	BSAK
New GL		FAGLF LEXA*	>	FAGLF LEXT*			FAGL BSIS	FAGL BSAS	
CO	COBK	COEP		COSS	COSP				
AA	ANEK	ANEP	ANEA	ANLC	ANLP				
ML	MLHD...	MLIT...		MLCD...	MCLR...		BSIM*	CKMI1*	

SAP Business Suite

MATERIAL VALUES

Valuation in MM or Valuation ML

Aggregates

Hybrid: Master Data with Valuated Stock

History

ML Valuation

MBEW	>	MBEWH	CKMLCR	MLPP	CKMLPP	CKMLPPWIP
EBEW	>	EBEWH	CKMLPP	MLCR	CKMLCR	CKMLKEPH
QBEW	>	QBEWH	MLHD	MLCRF	MLCD	CKMLMV004
OBEW	>	OBEWH	MLIT	MLKEPH	CKLMMV004	

MATERIAL QUANTITIES

Aggregates

Stock Aggregates

History

Material Document	>	MSSA	MSSL	MSSQ	>	MSSAH	MSTBH	MSSQH	
MKPF	MSEG	>	MSTE	MSTQ	MSTB	>	MSTEH	MSTQH	
Inventory Movements	Hybrid: Master Data with Stock Aggregates					>	MARCH	MARDH	
		MCHB	MARC	MARD	MSKU	>	MSLBH	MCHBH	MSKUH
		MSKA	MKOL	MSPR	MSLB	>	MSKAH	MSKAH	

SAP S/4HANA supports the intelligent enterprise through four key pillars

SAP S/4HANA

Your trusted path to an intelligent enterprise



End-to-end Analytics & Real-time guidance

Context aware, real time, predictive insights so you can make better decisions, adjustments, faster



Digital Age User Experience

Digital assistance and natural language conversations for increased productivity and user satisfaction



Intelligent Automation

Artificial intelligence and robotic process automation eliminate more than half of manual tasks



New Business Models

Rapidly design and execute new business models and digital services, based on advanced end-to-end processes

End-to-End analytics with SAP S/4HANA + SAP Analytics Cloud

Single analytics platform connecting all parts of your enterprise

for one version of the truth

Integrated into one user experience

versus separate tools and data sources

Embedded where you work

for real-time planning, analysis, and execution

Analytics Embedded in SAP S/4HANA transactions

For financial planning and analysis:

- no data replication required
- data never leaves the firewall
- real-time access to transactional data

For supply-chain management:

- real-time transparency on inventory
- improved effectiveness of planning with demand-driven MRP



SAP S/4HANA supports the intelligent enterprise through four key pillars

SAP S/4HANA

Your trusted path to an intelligent enterprise



End-to-end Analytics & Real-time Steering

Context aware, real time, predictive insights so you can make better decisions, adjustments, faster



Digital Age User Experience

Digital assistance and natural language conversations for increased productivity and user satisfaction



Intelligent Automation

Artificial intelligence and robotic process automation eliminate more than half of manual tasks



New Business Models

Rapidly design and execute new business models and digital services, based on advanced end-to-end processes

Example: Regular Transfer posting – SAPGUI in S/4HANA

Menu based navigation (or Tcodes)

SAPGUI can be used for the majority of the transactions.

Some transactions have been removed as part of simplification (e.g. Customer/Vendor replaced by business partner).

No contextual information (current inventory). Need to run other transactions to see inventory levels

Select dropdowns to search for source and target locations

Select the correct movement type

Example: Regular Transfer posting – NEW FIORI

Embedded

Material: MZ-TG-Y120

Y120 Bike (MZ-TG-Y120)

Material Type: Trading Goods (HAWA)

Base Unit of Measure: Piece (PC)

Range Of Coverage in Days: 29

Storage Location	Unrestricted-Use Stock	Blocked Stock	Stock in Quality Inspection
Std. storage 1 (171A)	24.607,000 PC	5,000 PC	0,000 PC
Std. storage 2 (171B)	0,000 PC	0,000 PC	0,000 PC
Raw mat.Stoloc. (171C)	0,000 PC	0,000 PC	0,000 PC
	24.607,000 PC	5,000 PC	0,000 PC

Transfer Stock - In-Plant

Issuing Storage Location: Std. storage 1 (171A)
Stock Type: Unrestricted-Use Stock
Current Quantity: 24.607,000 PC

Receiving Storage Location: Std. storage 2 (171B)
Stock Type: Blocked Stock
Current Quantity: 0,000 PC

Document Date: 27.06.2017
Posting Date: 27.06.2017
Quantity: 2
Attachments:

Select Target location

Enter quantity and post

- Embedded Analytics provides important contextual information (e.g. inventory by location and status and inventory summaries)
- Simplified experience with fewer clicks to select source and target locations and statuses.
- Automatic movement type determination based on parameters.
- Innovations with new FIORIs (including KPI overview pages, embedded analytics etc.) only available in FIORI

SAP S/4HANA supports the intelligent enterprise through four key pillars

SAP S/4HANA

Your trusted path to an intelligent enterprise



End-to-end Analytics & Real-time Steering

Context aware, real time, predictive insights so you can make better decisions, adjustments, faster



Digital Age User Experience

Digital assistance and natural language conversations for increased productivity and user satisfaction



Intelligent Automation

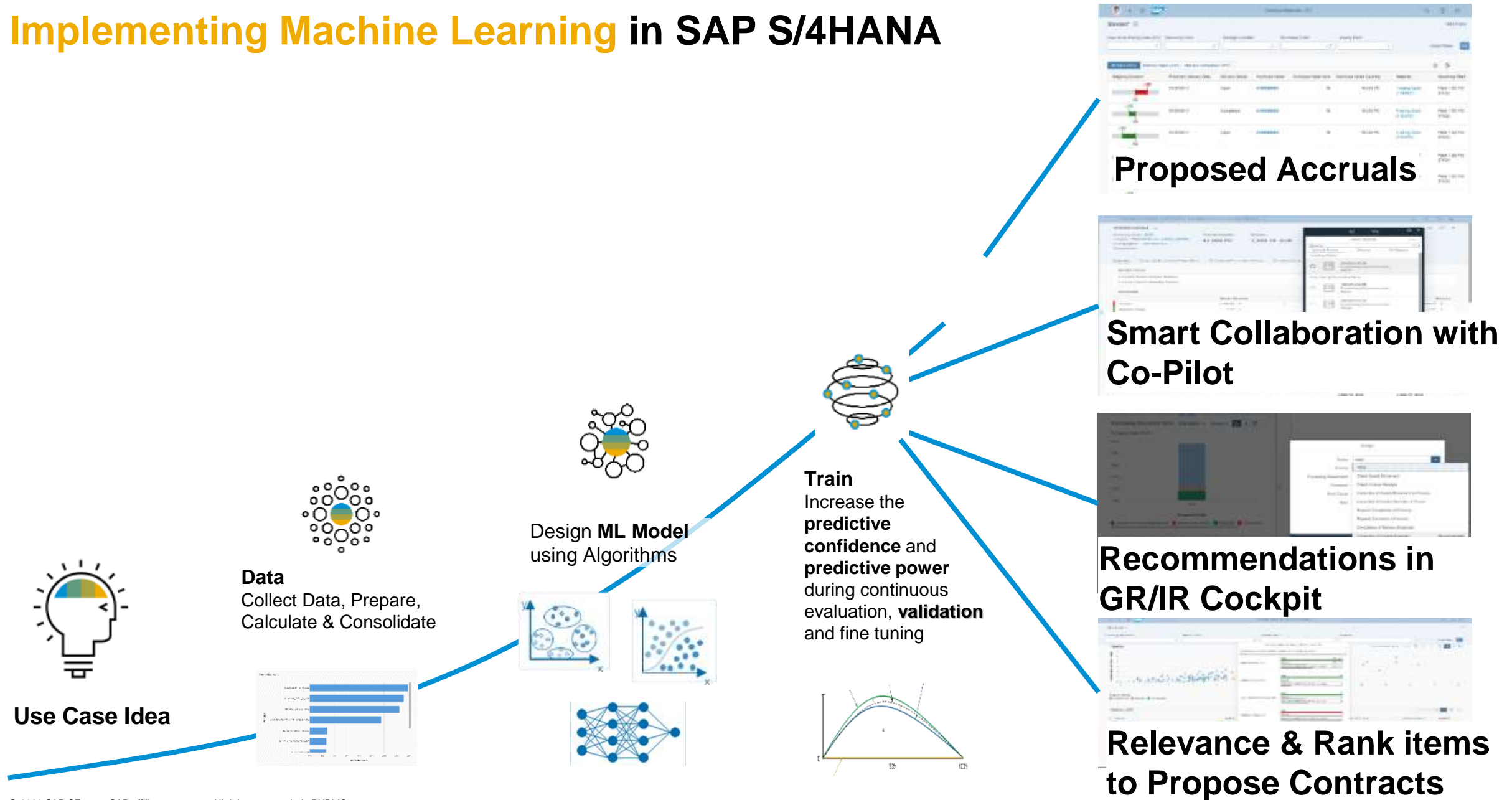
Artificial intelligence and robotic process automation eliminate more than half of manual tasks



New Business Models

Rapidly design and execute new business models and digital services, based on advanced end-to-end processes

Implementing Machine Learning in SAP S/4HANA



SAP S/4HANA supports the intelligent enterprise through four key pillars

SAP S/4HANA

Your trusted path to an intelligent enterprise



End-to-end Analytics & Real-time Steering

Context aware, real time, predictive insights so you can make better decisions, adjustments, faster



Digital Age User Experience

Digital assistance and natural language conversations for increased productivity and user satisfaction



Intelligent Automation

Artificial intelligence and robotic process automation eliminate more than half of manual tasks



New Business Models

Rapidly design and execute new business models and digital services, based on advanced end-to-end processes

Imagine: Products as a Service



Legacy Approach

- Skilled resources **travel great distances** to the oil wells to check condition and usage
- **Paper based** service tickets and inventory tracking
- **Manual data** entry to support billing
- **Breakdowns** causing unplanned downtime



Imagine

- **Hoerbiger** needed to switch from selling wellhead compression units to customers to selling compressor time as a high value service while increasing asset utilization

What's Possible

- **Automated usage monitoring** using IoT
- **Automated Billing** leveraging usage data
- **Predictive maintenance** using IoT data
- **Mobile devices** for field service technicians with real-time access to data and real-time updates to backoffice



The Impact

- **No-touch billing process**
- **Increased utilization** of skilled labor
- **Reduced compressor downtime**
- Increased **Customer Satisfaction**

Explore your value: <http://impact.s4value.com>

Using S/4HANA, SAP Cloud Platform, C/4HANA

